

NESHAMINY CREEK
STORMWATER MANAGEMENT PLAN
PHASE II STUDY

APPENDIX D
MANAGEMENT
DISTRICTS

Legend

- MANAGEMENT DISTRICTS
- SUBAREAS
- STREAMS
- WATER BODIES
- COUNTY BOUNDARY
- MUNICIPAL BOUNDARY
- ROADS
 - Interstate
 - US Federal Highway
 - PA State Route
 - Other State Road

Prepared For:
Bucks County Planning Commission
The Almshouse
Neshaminy Manor
Doylestown, PA

NOTES:
Portions of this map were generated from the existing data sources as listed below. These existing data sources were utilized for base mapping purposes and are shown for spatial reference only. These data sources did not enter into any computations or affect the reliability of the hydrological analyses. Borton-Lawson Engineering has found some inaccuracies in some of these data sources and has corrected the data where these discrepancies were obvious, however it was not a part of this ACT 167 Plan to correct all of the base data.

DATA SOURCES:
Watershed Boundary - PADEP- Updated by BLE
Municipal and County Boundaries - PennDOT
Roads - PennDOT
Streams - Bucks and Montgomery County Planning Commissions
Water Bodies - Derived from the Streams Data
Management Districts and Subareas - Delineated by BLE

Acronyms
PennDOT - Pennsylvania Department of Transportation
PADEP - Pennsylvania Department of Environmental Protection
BLE - Borton Lawson Engineering

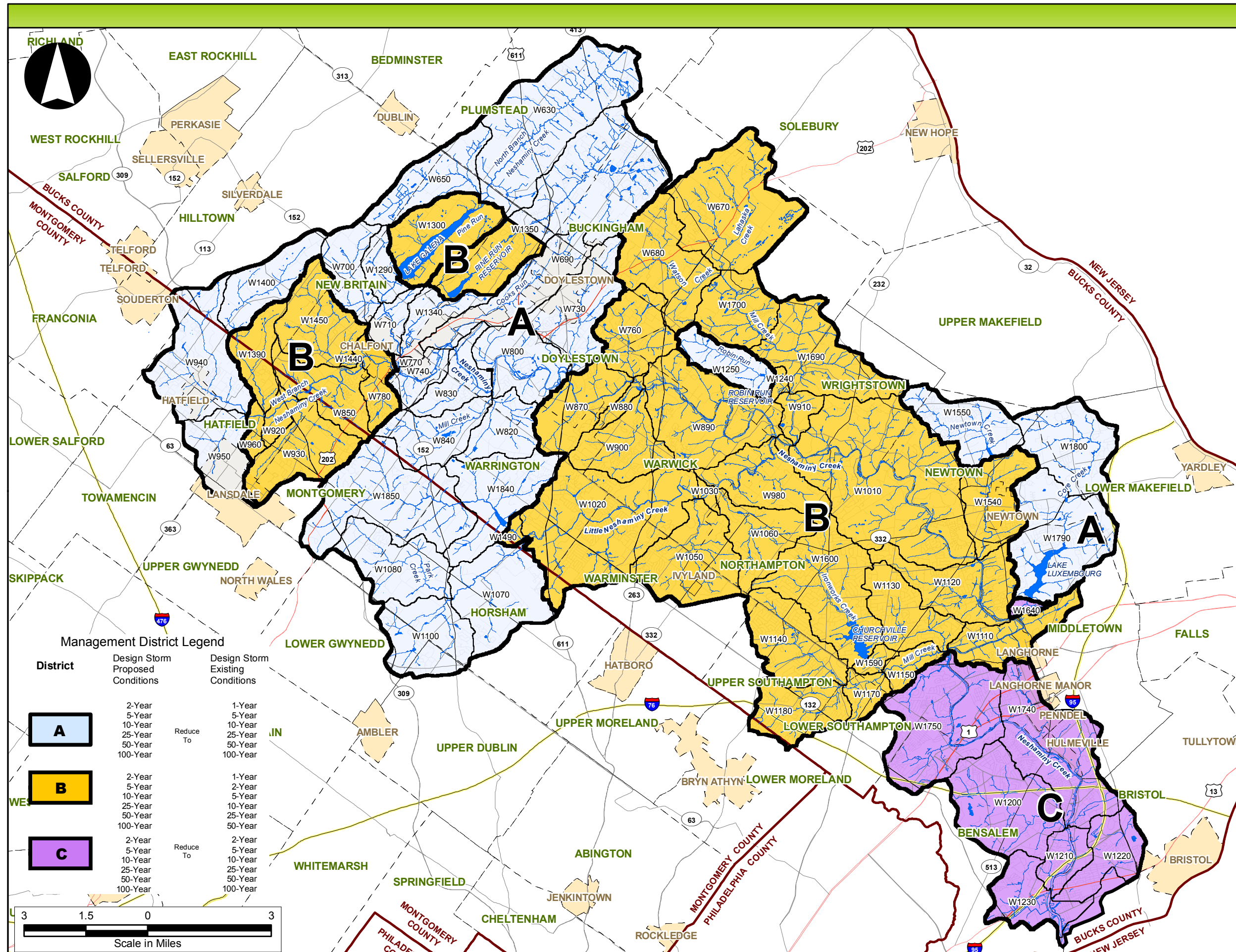


Northeast Pennsylvania
613 Baltimore Drive
Wilkes-Barre, PA 18702
Tel: 570-821-1999

Lehigh Valley
3893 Adler Place
Bethlehem, PA 18017
Tel: 484-821-0470

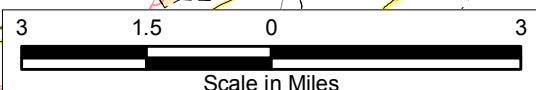
PREPARED BY: WSB
DATE: 12/18/2006

CHECKED BY:
PROJECT NO.: 2003-1412-00



Management District Legend

District	Design Storm Proposed Conditions	Design Storm Existing Conditions
A	2-Year 5-Year 10-Year 25-Year 50-Year 100-Year	1-Year 5-Year 10-Year 25-Year 50-Year 100-Year
B	2-Year 5-Year 10-Year 25-Year 50-Year 100-Year	1-Year 2-Year 5-Year 10-Year 25-Year 50-Year
C	2-Year 5-Year 10-Year 25-Year 50-Year 100-Year	2-Year 5-Year 10-Year 25-Year 50-Year 100-Year



APPENDIX D1 MANAGEMENT DISTRICTS

MANAGEMENT DISTRICTS

SUBAREAS

STREAMS

WATER BODIES

COUNTY BOUNDARY

MUNICIPAL BOUNDARY

ROADS

Interstate

US Federal Highway

PA State Route

Other State Road

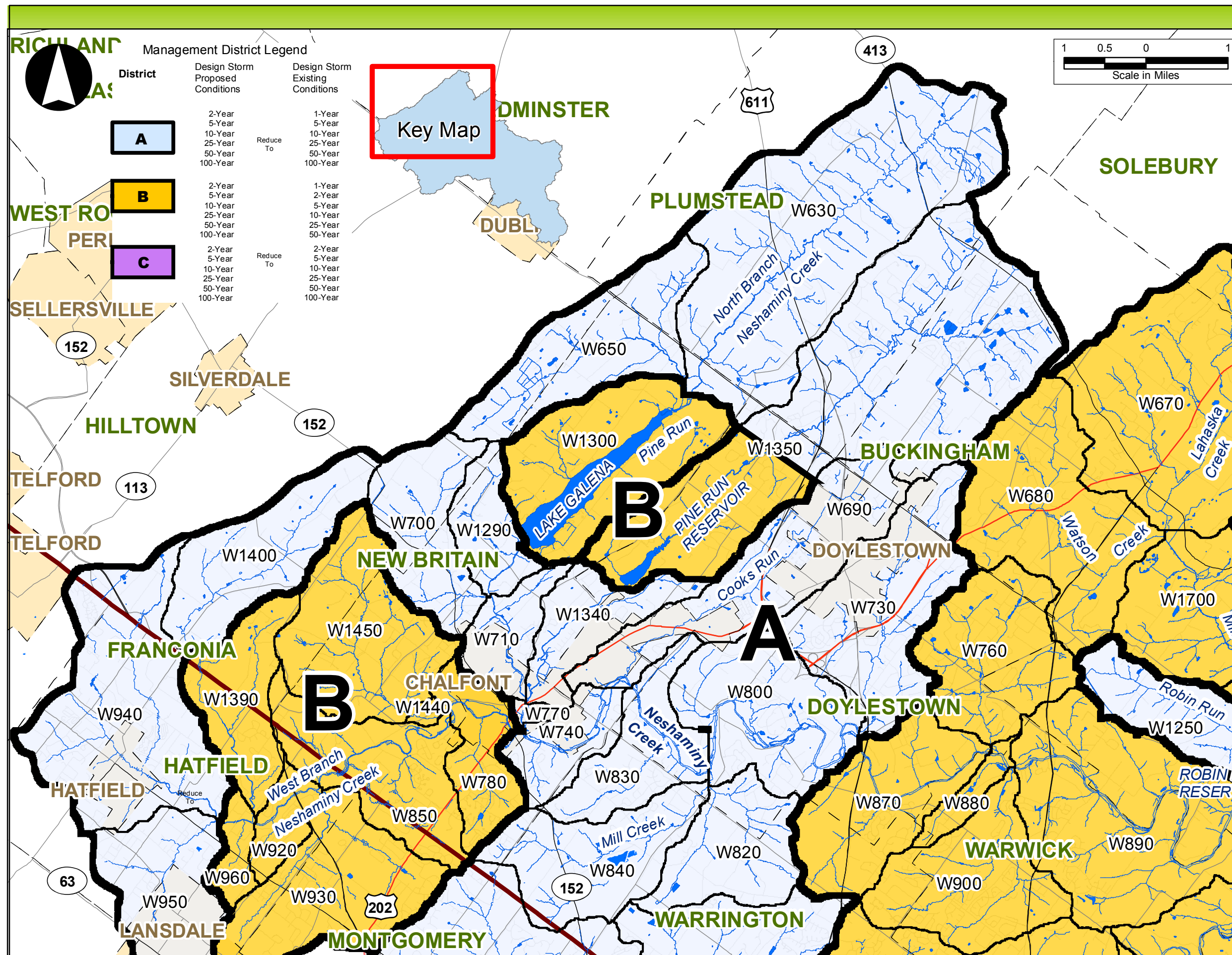
NOTES:
Portions of this map were generated from the existing data sources as listed below. These existing data sources were utilized for base mapping purposes and are shown for spatial reference only. These data sources did not enter into any computations or affect the reliability of the hydrological analyses. Borton-Lawson Engineering has found some inaccuracies in some of these data sources and has corrected the data where these discrepancies were obvious, however it was not a part of this ACT 167 Plan to correct all of the base data.

Acronyms
PennDOT - Pennsylvania Department of Transportation
PADEP - Pennsylvania Department of Environmental Protection
BLE - Borton Lawson Engineering



Borton
Lawson
ENGINEERING

CHECKED BY:
PROJECT NO.: 2003-1412-00



APPENDIX D2 MANAGEMENT DISTRICTS

MANAGEMENT DISTRICTS

SUBAREAS

STREAMS

WATER BODIES

COUNTY BOUNDARY

MUNICIPAL BOUNDARY

ROADS

Interstate

US Federal Highway

PA State Route

Other State Road

NOTES:
Portions of this map were generated from the existing data sources as listed below. These existing data sources were utilized for base mapping purposes and are shown for spatial reference only. These data sources did not enter into any computations or affect the reliability of the hydrological analyses. Borton-Lawson Engineering has found some inaccuracies in some of these data sources and has corrected the data where these discrepancies were obvious, however it was not a part of this ACT 167 Plan to correct all of the base data.

Acronyms
PennDOT - Pennsylvania Department of Transportation
PADEP - Pennsylvania Department of Environmental Protection
BLE - Borton Lawson Engineering

Lehigh Valley
3893 Adler Place
Bethlehem, PA 18017
Tel: 484-821-0470

CHECKED BY:
PROJECT NO.: 2003-1412-00

